



COURSE BROCHURE

2024

WELCOME TO SEA!

Welcome to SEA English Academy!

We're thrilled to welcome you to our English language school in the heart of Melbourne CBD. With over 20 years of experience, originally in Manly, New South Wales, we've helped more than 3000 students from 40+ countries achieve their English learning goals.

Our motto is simple: "Belong... Enjoy... Succeed." We want you to feel like you belong here, enjoy your time learning, and succeed in your English journey.

Whether you're new to Australia or just starting your language adventure, SEA is here for you. Our small class sizes mean you get the attention you need, and our experienced team is ready to guide you every step of the way.

So, welcome to SEA English Academy—where learning English is an adventure, and success is part of the journey. We wish you the best in your time here in Melbourne!

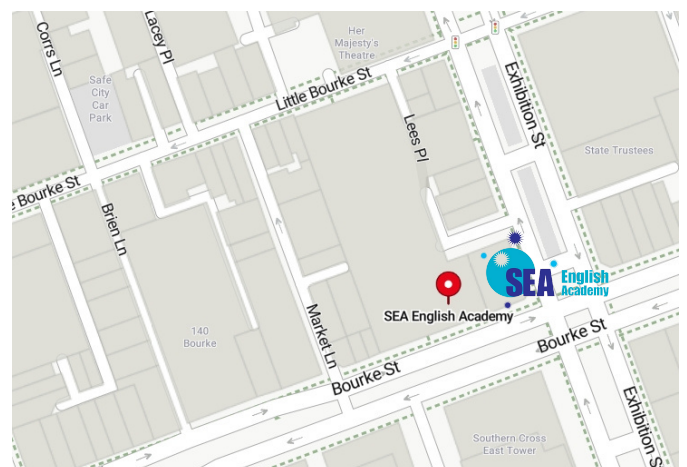


MELBOURNE CAMPUS

Address: Shop 21 / 108 Bourke St
Melbourne VIC 3000

Phone: (03) 9041 6887

Email: admissions@sea-english.edu.au



WHY SEA ENGLISH?

- 1 Amazing location in Melbourne CBD
- 2 Australian trainers with many years of teaching background
- 3 Small classes with more attentions from your teachers
- 4 Two sessions (morning/evening) are available to suit your needs
- 5 Free resume writing help and job searching help
- 6 Fantastic mix of student nationalities and a multicultural staff team can speak your language
- 7 Free extra classes and supports from your teacher every week
- 8 Perfect English speaking environment and English Only rules apply
- 9 Multiple pathways to great Australian colleges and universities are available



The best English School ever! Good location and environment. Teachers, friends and staffs are so nice. Everything is amazing. I learnt and got so many things from here. It's unforgettable experience for me!



Chita N



The teachers are friendly and encouraged me and gave me confidence a lot. And they make atmosphere you feel comfortable. SEA made my amazing days in Australia. Definitely the best school ever:)



Yurika W



Everyone here was very nice and helpful. You can enjoy and learn from here. Have fun!



Stacy T



It is the best school with the best staff. They taught me more than just English. It is the best school with the best professionals. They taught me more than just English.



Livia P



The teachers at SEA not only taught me English, but also helped me revise my CV, making it easier for me to find my first job in Australia. They are very kind and professional! Thank you!



Cristian P



Nice School! Nice Teachers! Nice Place! I learned a lot in this school and have a very nice time here.



Ruizhen D



OUR ENGLISH COURSES

GENERAL ENGLISH CRICOS 042504F

Our General English courses are designed for international students who want to improve their fluency, accuracy and confidence in speaking English and are suitable for students at any level of English. SEA English Academy is committed to small class teaching to better take care of every student, with an average of 12 students per class and a maximum of 18 students. Our courses will also develop English language skills, which are essential for future study, work or personal interests.



ENTRY REQUIREMENTS

- At least 18 years of age
- Completed SEA Application Form (FORM-E02)
- Completed Pre-Training Assessment (FORM-E03)
- A scanned copy of student's passport
- Provide an English test result (IELTS, TOFEL, PTE, etc.) or wish to take an SEA English placement test



COURSE STRUCTURE

- General English courses consist 4 levels
- Each level contains 10 teaching weeks
- There are 20 teaching hours each week



Upper-Intermediate

Intermediate

Pre-Intermediate

Elementary



CLASS TIMETABLE

Morning Session

09:00 - 14:30 (Monday to Thursday)

Evening Session

17:30 - 21:30 (Monday to Friday)



INTAKE DATES

Our General English courses have fixed every 5 weeks intake.

8th January 2024

12th February 2024

18th March 2024

22nd April 2024

27th May 2024

1st July 2024

5th August 2024

9th September 2024

14th October 2024

18th November 2024

MORE INFORMATION



OUR ENGLISH COURSES

ENGLISH FOR ACADEMIC PURPOSES (EAP)

CRICOS 113988M

Focusing specifically on cultivating formal writing proficiency, research acumen, and critical thinking skills, the English for Academic Purposes (EAP) program aims to nurture, exercise, and enhance the competencies essential for advancing to certificate, diploma, degree, or post-graduate level studies conducted in English.

Participants will be led through diverse academic procedures, including research methodologies, thesis statement formulation, essay scaffolding, and refining written compositions to elevate the quality of academic papers. Throughout this process, continuous feedback and constructive suggestions will be provided, ensuring that students are well-equipped for successful entry into their preferred tertiary programs.



ENTRY REQUIREMENTS

- At least 18 years of age
- Completed SEA Application Form (FORM-E02)
- A scanned copy of student's passport
- Students need to have either completed Upper-Intermediate in the General English course or be able to otherwise prove a B1 proficiency in English.



COURSE STRUCTURE

- EAP courses consist 2 levels
- Each level contains 10 teaching weeks
- There are 20 teaching hours each week



EAP Advanced

EAP Foundation



CLASS TIMETABLE

Morning Session

09:00 - 14:30 (Monday to Thursday)

Evening Session

17:30 - 21:30 (Monday to Friday)



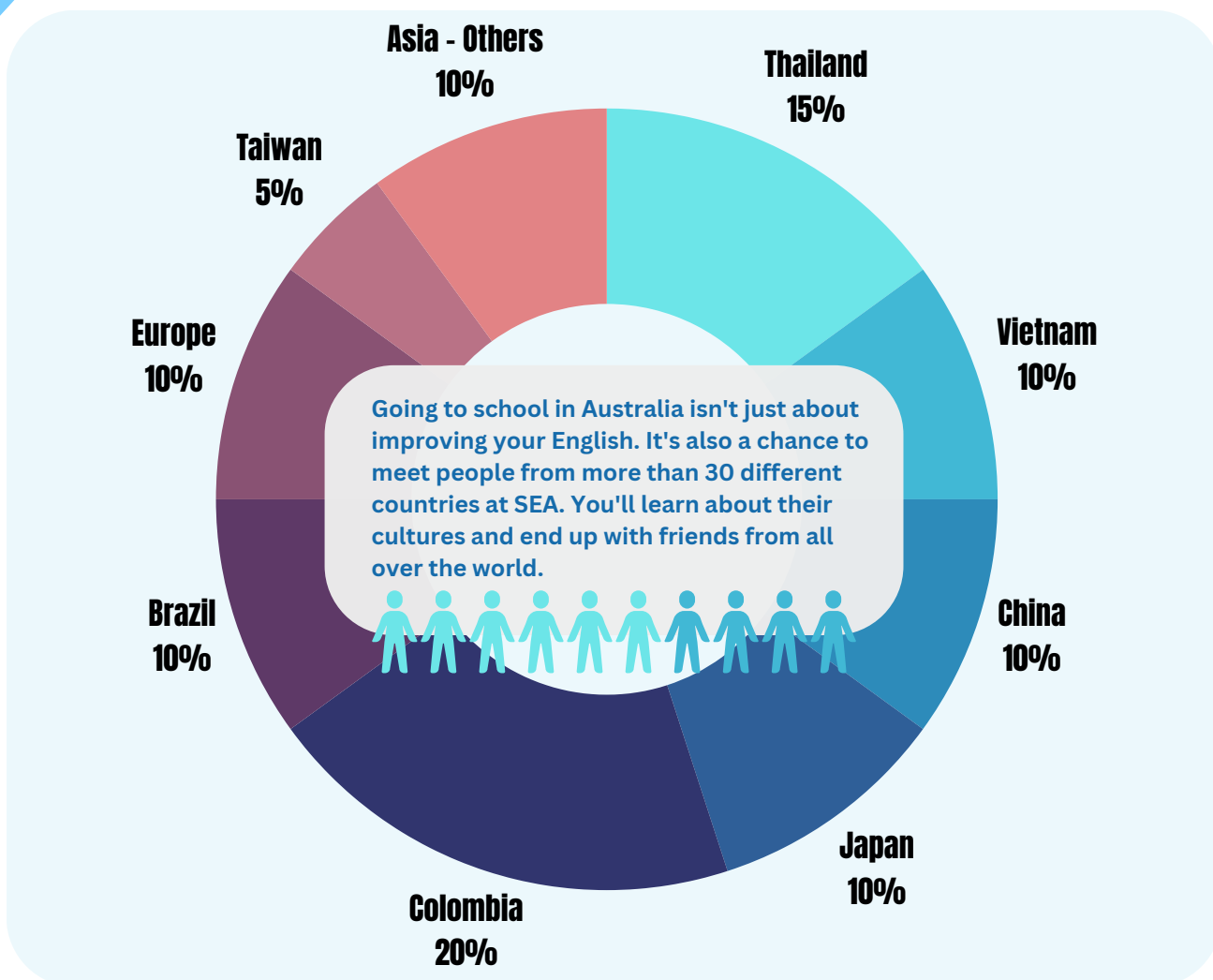
INTAKE DATES

Please contact SEA Admin Team to get the upcoming intake dates for our EAP programs.

MORE INFORMATION



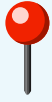
OUR NATIONALITY MIX



ENGLISH LANGUAGE SCALE

CEFR Level	General English Level	EAP Level	Cambridge Certificate
C1		EAP Advanced	
B2	Upper-Intermediate	EAP Foundation	First Certificate
B1	Intermediate		
A2	Pre-Intermediate		
A1+	Elementary		

DISCOVER SEA MELBOURNE CAMPUS



PRIME LOCATION

We're in the heart of Melbourne CBD, on Bourke St in the Paramount Retail Centre. It's a cool spot in the state of Victoria, Australia, with lots to explore.



PERFECT CLASS SIZE



We have four classrooms, and each one has space for up to 18 students. Small classes mean you get the attention you need to learn well.



EASY TO GET AROUND

Our place is super close to Parliament Station and Melbourne Central Station. There are tram stops on Bourke St, and guess what? SEA is in the free tram zone, so you get to ride around the city for free!



CONVENIENT BREAKS



Need a break? No worries! We've got a clinic, grocery stores, and a food court right here in the building. Everything you need is just steps away, making your break time comfy and convenient.



COMPUTER



FREE WIFI



STUDENT LOUNGE



MICROWAVE



FREE COFFEE & TEA

EXTRACURRICULAR ACTIVITIES

Our school is more than just classes—it's an adventure. Imagine going on trips every week, exploring the city, visiting museums, and trying tasty Aussie food. SEA English Academy makes learning fun and easy!



ACCOMMODATION SERVICES

At SEA English Academy we are delighted to support our enrolled students in accessing cost-effective, convenient and safe student accommodation through our trusted partners. Our range of options includes commercial student apartment and homestay services, providing our students with a comprehensive and safe living environment.



CV WRITING AND JOB INTERVIEW WORKSHOP

For newly arrived international students in Australia, embarking on the search for your first job can be a challenging endeavour. At SEA English Academy, our dedicated teachers offer comprehensive assistance to all enrolled students in crafting their CVs and training their job interview skills. We conduct weekly workshops focused on CV writing and job interview preparation. Join us to benefit from valuable insights and guidance as you take your initial steps towards a successful career.



PARTNERSHIPS AND PATHWAYS

Explore endless possibilities with SEA English Academy! We've partnered with following institutions and organisations to help you smoothly transition to advanced studies and a promising career. Start your journey with us and step into a world of opportunities!



MERCURY
INSTITUTE OF VICTORIA



GET
EDUCATION
AUSTRALIA

Workforce
Extensions
Melbourne CBD

OVERSEAS STUDENT HEALTH COVER (OSHC)

We've joined forces with Medibank Australia to make sure you easily get your Overseas Student Health Cover (OSHC). Need an OSHC for your student visa? Our team is here to help you out, and there's no extra charge. Medibank is a trusted insurance company in Australia, taking care of your health needs while you study. Plus, we keep it simple – no hidden fees, just straightforward support for your health and education journey in Australia.



STUDENT COUNSELING SERVICES

We know starting a new chapter in Australia can be tough, so we've got your back! At SEA English Academy, we've partnered with the Victoria University Psychology Clinic to offer counseling services to our students. Whether it's dealing with stress or facing challenges, our team is here to provide the support you need. Your well-being is important to us, and we're committed to making your study experience in Australia a bit easier.



STUDENT MEDICAL SERVICES

At SEA English Academy, we care about your health. If you're not feeling well, it's time to see a doctor. We've made it easy for you by teaming up with Paramount Clinic, right on the same level as our school. The best part? They have a team of doctors who speak your language, so you can communicate comfortably about your health. Don't let language be a barrier to getting the care you need. SEA and Paramount Clinic are here to make sure you feel your best during your time with us.



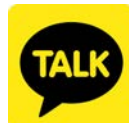
WeChat
Chinese



WhatsApp
Spanish / Portuguese



Line
Japanese



KaKao Talk
Korean



Messenger
English



OUR MULTICULTURAL TEAM IS ALWAYS ONLINE TO HELP

LIFE IN MELBOURNE

Melbourne is a lively and well-known city where people can be themselves, try new things, and enjoy art, culture, music, food, fashion, sports, and more. Whether you like shopping, art exhibitions, or exploring nature in Australia, Melbourne has it all for you to discover.



more than 5,000,000 + people, the capital city of Victoria, Australia



the world's most livable city, famous for its coffee shops and coffee culture



there is a multicultural community and food from all over the world



the sport capital of Australia, the origin of Australian rules football



developed tourism and hospitality industries with a large number of potential job opportunities



Great Ocean Road



State Library of Victoria



Federation Square



Southbank Promenade



Brighton Beach

APPROXIMATE COST OF LIVING

Rent	\$200 - \$350 pw
Monthly Phone Bill	\$30
Grocery Shopping	\$60 - \$100 pw
Coffee	\$5 - \$7
Public Transport	\$30 pw
Lunch	\$10 - \$15
Monthly Utility Bills	\$30 - \$50
Movie Ticket	\$15 - \$20

Minimum Salary	\$23.23 ph (Part time)
	\$29.04 ph (Casual)

Costs are for reference only and in Australian Dollars (AUD).





www.sea-english.edu.au



admissions@sea-english.edu.au



+61 3 9041 6887 (Overseas)
(03) 9041 6887 (Australia)



Melbourne Campus

Shop 21 / 108 Bourke St
Melbourne VIC 3000
Australia



SEA English Academy



@sea_melb